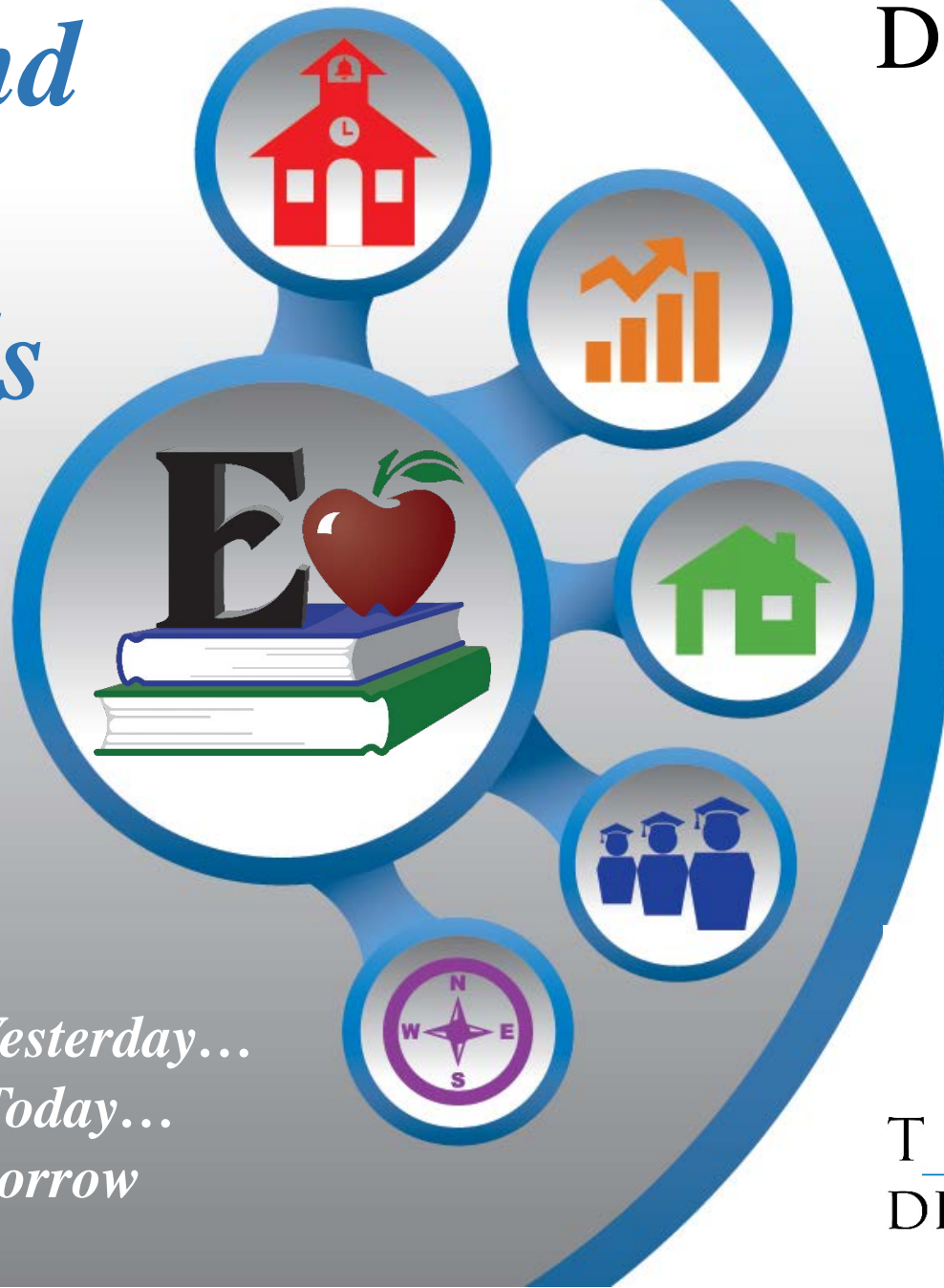


# *Edmond Public Schools*



Demographic  
Study  
Fall 2015

*Learn from Yesterday...  
Understand Today...  
Plan for Tomorrow*



TEMPLETON  
DEMOGRAPHICS



# Ten Year Forecast (Before Realignment)

By Middle School & High School Campus

CAMPUS	Capacity	HISTORY	Current	ENROLLMENT PROJECTIONS									
		2014/15	2015/16	2016/17	2017/18	2018/19	2019/20	2020/21	2021/22	2022/23	2023/24	2024/25	2025/26
CENTRAL MIDDLE SCHOOL	950	842	836	806	804	862	905	980	981	984	970	969	981
CHEYENNE MIDDLE SCHOOL	950	944	986	1,041	1,080	1,119	1,160	1,181	1,152	1,132	1,120	1,144	1,151
CIMARRON MIDDLE SCHOOL	900	758	801	808	808	829	830	823	836	863	911	904	910
SEQUOYAH MIDDLE SCHOOL	1,000	1,261	1,344	1,462	1,535	1,558	1,567	1,665	1,702	1,714	1,757	1,786	1,840
SUMMIT MIDDLE SCHOOL	950	1,221	1,229	1,258	1,297	1,309	1,411	1,465	1,512	1,474	1,454	1,459	1,463
HEARTLAND	1,000	0	0	0	0	0	0	0	0	0	0	0	0
<b>MIDDLE SCHOOL TOTALS</b>	<b>5,750</b>	<b>5,026</b>	<b>5,196</b>	<b>5,375</b>	<b>5,524</b>	<b>5,677</b>	<b>5,873</b>	<b>6,114</b>	<b>6,183</b>	<b>6,167</b>	<b>6,212</b>	<b>6,262</b>	<b>6,345</b>
Middle School Absolute Growth		31	170	179	149	153	196	241	69	-16	45	50	83
Middle School Percent Growth		0.62%	3.38%	3.44%	2.77%	2.77%	3.45%	4.10%	1.13%	-0.26%	0.73%	0.80%	1.33%
MEMORIAL HIGH SCHOOL	2,250	2,161	2,155	2,167	2,191	2,177	2,194	2,214	2,249	2,300	2,331	2,402	2,423
NORTH HIGH SCHOOL	2,400	2,586	2,644	2,738	2,790	2,877	3,043	3,144	3,266	3,393	3,459	3,533	3,591
SANTA FE HIGH SCHOOL	2,224	2,231	2,218	2,275	2,340	2,376	2,409	2,475	2,532	2,663	2,773	2,812	2,843
<b>HIGH SCHOOL TOTALS</b>	<b>6,874</b>	<b>6,978</b>	<b>7,017</b>	<b>7,180</b>	<b>7,321</b>	<b>7,430</b>	<b>7,646</b>	<b>7,833</b>	<b>8,047</b>	<b>8,356</b>	<b>8,563</b>	<b>8,747</b>	<b>8,857</b>
High School Absolute Growth		159	39	163	141	109	216	187	214	309	207	184	110
High School Percent Growth		2.33%	0.56%	2.32%	1.96%	1.49%	2.91%	2.45%	2.73%	3.84%	2.48%	2.15%	1.26%
<b>DISTRICT TOTALS</b>	<b>25,008</b>	<b>23,507</b>	<b>23,965</b>	<b>24,541</b>	<b>25,092</b>	<b>25,536</b>	<b>26,032</b>	<b>26,476</b>	<b>26,855</b>	<b>27,262</b>	<b>27,592</b>	<b>27,925</b>	<b>28,250</b>
District Absolute Growth		503	458	576	551	444	496	444	379	407	330	333	325
District Percent Growth		2.2%	1.9%	2.4%	2.2%	1.8%	1.9%	1.7%	1.4%	1.5%	1.2%	1.2%	1.2%

- Cheyenne Middle School may have more than 1,000 students by next fall and more than 1,100 by 2018
- Sequoyah Middle School may enroll more than 1,500 students by 2017
- Total middle school enrollment may reach 5,500 by 2017
- North High School may have more than 3,000 students by 2019
- Edmond Public Schools is anticipated to add 576 students next fall





# District Realignment Committee Calendar

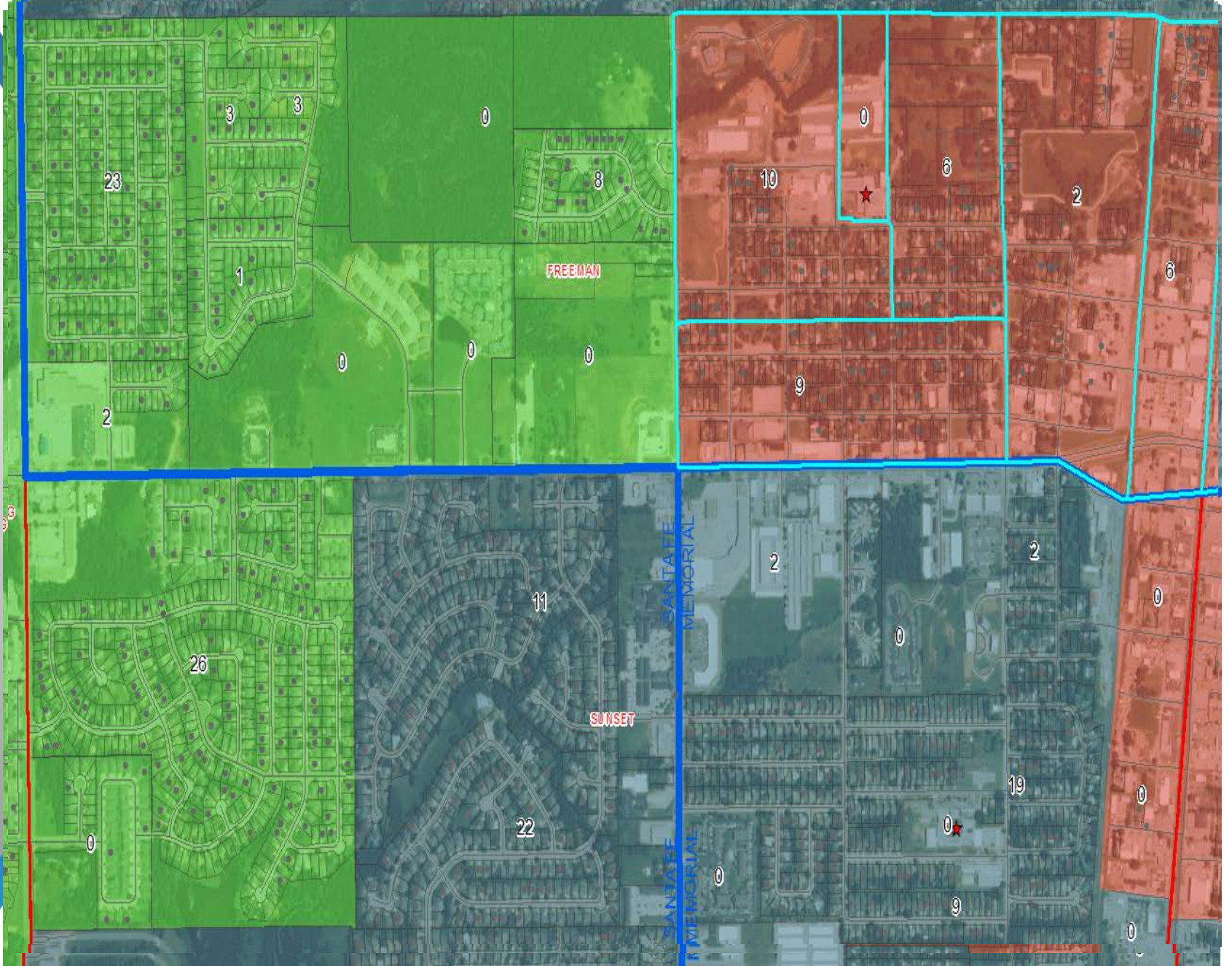
- January 21<sup>st</sup>, 2016 (3-6:00pm) – DRC Boundary Planning Meeting
- January 28<sup>th</sup>, 2016 (3-6:00pm) – DRC Boundary Planning Meeting
- February 3<sup>rd</sup>, (3-6:00pm) , 2016 – DRC Boundary Planning Meeting (Wed.), if necessary
- February 11<sup>th</sup>, 2016 (7-8:30pm) – 1<sup>st</sup> Public Meeting, Boundary Plan(s) presented, by DRC, to the public.
- February 18<sup>th</sup>, 2016 (7-8:30pm) – 2<sup>nd</sup> Public Meeting, Boundary Plan(s) presented, by DRC, to the public
- Date TBD – DRC meets to review/discuss public input and vote on final plan.
- February 22<sup>nd</sup>, 2016 (6:00pm) – DRC presents final recommendation to the Edmond Board of Education for final approval





# Heartland Middle School Guiding Principles for Re-Districting

- Attendance areas should be designed to serve the district for more than 5 years.
- Attendance areas should be largely contiguous and lack the appearance of gerrymandering.
- Walk paths for each school must be considered.
- Allow for initially smaller school populations in schools with higher than anticipated growth rates.
- High schools should each be aligned with two middle schools.
- When possible, elementary school boundaries should align with middle school boundaries, which should align with high school boundaries.
- Neighborhoods should be assigned to the same school when possible.
- The district should honor existing transfers into schools.
- All students should be expected to attend their new schools.
- Transportation routes should be as efficient as possible, giving consideration to minimizing ride times within established parameters.
- There may be an option for the 2016-2017 eighth graders to matriculate through their current school (Board decision).





## EDMOND ISD 2016/17 BOUNDARY PLANNING - GRADE REPORT

Campus	Capacity	Current	2016/17 Enrollment Projections by Grade - NEW PLAN							
		2015/16	6th	7th	8th	9th	10th	11th	12th	Total
CENTRAL MIDDLE SCHOOL	950	836	292	244	289	0	0	0	0	825
CHEYENNE MIDDLE SCHOOL	950	986	296	284	329	0	0	0	0	909
CIMARRON MIDDLE SCHOOL	900	801	266	301	275	0	0	0	0	842
SEQUOYAH MIDDLE SCHOOL	1,000	1,344	322	311	444	0	0	0	0	1,077
SUMMIT MIDDLE SCHOOL	950	1,229	302	334	419	0	0	0	0	1,055
HEARTLAND MIDDLE SCHOOL	1,000	0	345	312	0	0	0	0	0	657
<b>MIDDLE SCHOOL TOTALS</b>		<b>5,196</b>	<b>1,823</b>	<b>1,786</b>	<b>1,756</b>	<b>0</b>	<b>0</b>	<b>0</b>	<b>0</b>	<b>5,365</b>
MEMORIAL HIGH SCHOOL	2,750 (18/19)	2,155	0	0	0	669	544	524	524	2,261
NORTH HIGH SCHOOL	2,970 (18/19)	2,644	0	0	0	616	713	687	598	2,614
SANTA FE HIGH SCHOOL	2,750 (17/18)	2,218	0	0	0	652	596	568	490	2,306
<b>HIGH SCHOOL TOTALS</b>		<b>7,017</b>	<b>0</b>	<b>0</b>	<b>0</b>	<b>1,937</b>	<b>1,853</b>	<b>1,779</b>	<b>1,612</b>	<b>7,181</b>

### Enrollment Projection Assumptions

- In 2016/17 Heartland MS only includes 6<sup>th</sup>-7<sup>th</sup> grades.
- Current 5<sup>th</sup> grade students attend 6<sup>th</sup> grade at the campus they reside within following boundary realignment. No transfers.
- Current 6<sup>th</sup> grade students expected to attend the campus they reside within following boundary realignment. Current transfers continue but no new transfers.
- All current 7<sup>th</sup> graders projected to stay at their current campus for 8<sup>th</sup> grade.
- All current high school students may finish at the campus they are now attending.



# February 3<sup>rd</sup> Plan Middle and High School 5 - Year Projections

## CAMPUS LEVEL ENROLLMENT HISTORY AND PROJECTIONS

CAMPUS	Capacity	HISTORY	Current	ENROLLMENT PROJECTIONS - NEW PLAN				
		2014/15	2015/16	2016/17	2017/18	2018/19	2019/20	2020/21
CENTRAL MIDDLE SCHOOL	950	842	836	825	814	876	900	969
CHEYENNE MIDDLE SCHOOL	950	944	986	909	903	956	988	1,025
CIMARRON MIDDLE SCHOOL	900	758	801	842	843	835	848	851
SEQUOYAH MIDDLE SCHOOL	1,000	1,261	1,344	1,077	962	977	978	1,032
SUMMIT MIDDLE SCHOOL	950	1,221	1,229	1,055	997	1,003	1,090	1,111
HEARTLAND	1,000	0	0	657	996	1,025	1,069	1,120
<b>MIDDLE SCHOOL TOTALS</b>	<b>5,750</b>	<b>5,026</b>	<b>5,196</b>	<b>5,365</b>	<b>5,515</b>	<b>5,672</b>	<b>5,873</b>	<b>6,108</b>
Middle School Absolute Growth		31	170	169	150	157	201	235
Middle School Percent Growth		0.62%	3.38%	3.25%	2.80%	2.85%	3.54%	4.00%
MEMORIAL HIGH SCHOOL	2,750 (18/19)	2,161	2,155	2,261	2,370	2,494	2,626	2,642
NORTH HIGH SCHOOL	2,970 (18/19)	2,586	2,644	2,614	2,576	2,511	2,513	2,618
SANTA FE HIGH SCHOOL	2,750 (17/18)	2,231	2,218	2,306	2,391	2,431	2,510	2,573
<b>HIGH SCHOOL TOTALS</b>	<b>8,470</b>	<b>6,978</b>	<b>7,017</b>	<b>7,181</b>	<b>7,337</b>	<b>7,436</b>	<b>7,649</b>	<b>7,833</b>

- Plan projections may differ slightly from original enrollment projections due to unknown impacts of transfers and grandfathering on the cohorts.