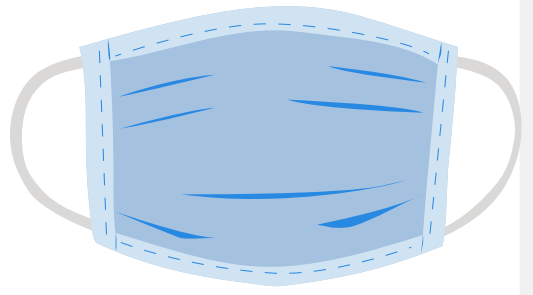


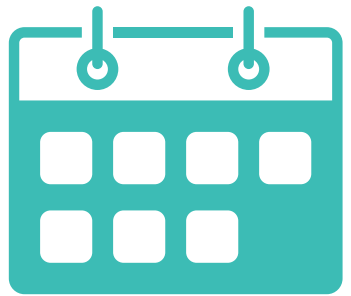


Learning Plan 21-22*



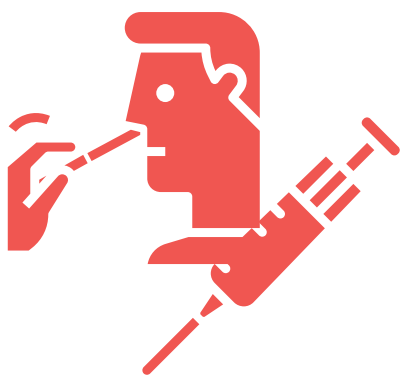
Masks

- Following Senate Bill 658, masks will not be required unless Oklahoma County is declared a state of emergency.
- If Okla Co. is declared a state of emergency, EPS will implement our tiered system to determine site by site if masks should be required.
- Masks are encouraged when cases are high in the community.



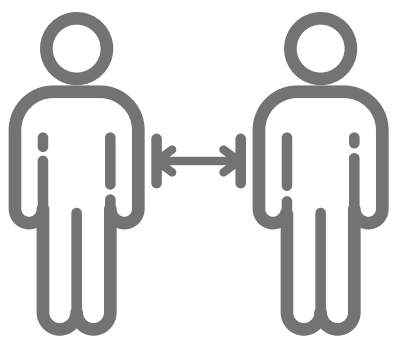
5 Days a Week

- School will be in session 5 days a week.
- If a site reaches Tier III on the EPS tiered level, that site will switch to remote learning for 10 days.



Vaccinations and Testing

- Vaccinations are encouraged but not required for those eligible.
- Testing will be offered for employees and students as long as the demand for testing warrants keeping a testing site open.



Social Distancing & Contact Tracing

- Social distancing will be encouraged when space allows.
- Students will not be restricted to their pod or "family."
- Sites will track and report the number of positive cases in the school.
- Contract tracing will take place as directed by the Oklahoma City-County Health.



Quarantines and Isolations

- Anyone with a positive COVID-19 test will be required to stay home.
- As always, anyone with a fever, diarrhea or vomiting must stay home until 24 hours symptom free.
- Schools will notify parents if their child has been in close contact with a positive COVID-19 person.
- Quarantines are required for nonvaccinated students and staff when exposed to a positive COVID-19 case.



Cleaning

- X-Effect spray bottles will be in each classroom for teachers to use as needed.
- Electrostatic sprayers will be used in classrooms and on buses as needed especially during flu season.



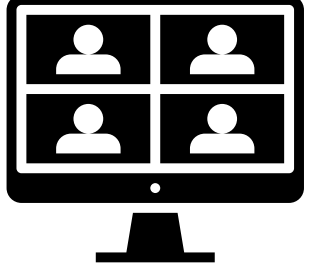
Hand Sanitizer

- Hand sanitizer will be available and encouraged for use.



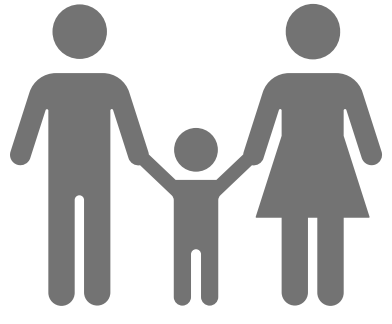
Students with Disabilities

- Students with disabilities will be provided services based upon their IEP or 504 educational plan.



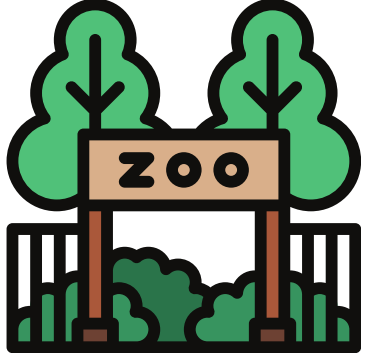
Virtual Meetings

- Virtual Parent/Teacher conferences will be offered to parents who cannot or choose not to attend in person.
- Virtual IEP/504 meetings will be offered to parents who cannot attend in person.



Parents, Guests and Visitors

- PTO/PTA meetings and volunteer workers are welcomed in the building.
- Visitors and guests will be allowed in the building for programs, concerts and other special events.



Field Trips and Travel

- Field trips and travel will be allowed based on the restrictions that were in place pre-Covid.



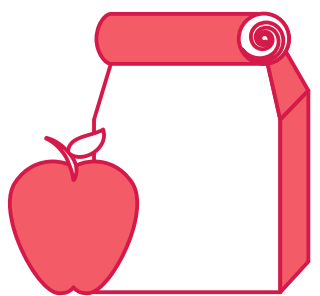
Electronic Utility Bill Verification and Schedule Pick-up

- Utility bills can be submitted electronically and schedules will be sent out via email.
- Schools will be open at set times for students to find and visit their classes.
- PTO/PTAs can promote membership and sell items during these times.



Remote Learning

- If a school is closed due to Covid positive cases, weather conditions or other extraordinary circumstances, remote learning will be instituted.
- PK-2 students will temporarily receive instruction via SeeSaw, 3-12 via Canvas and sp. ed according to their IEP.



Lunches

- Students will eat in the cafeteria and resume lunches as they were prior to Covid.
- Guests at lunch will be limited to special occasions set by the school.
- Door Dash and other delivery services will not be allowed at the elementary.
- Juniors will return to closed campus status.
- Lunches are free to all students for the 21-22 school year and will be provided if the school is closed



Start times

- School start times will remain the same as they were for the 20-21 school year.



Lockers

- Lockers will not be assigned to middle school students at the beginning of the year. This will be re-evaluated as colder weather approaches.

Edmond Public Schools Tiered System

Elevated numbers at a single site will be investigated case by case.

Mask requirements will only be implemented if the county is declared a state of emergency by the Governor and in consultation with state and county health departments pursuant to SB 658.

Positive cases include students and staff.

System is enacted on a site-by site basis

Green 0-2% per site	Masks welcomed, not required; follow typical school procedures, no changes necessary
Yellow 2.1% - 3% per site	Masks encouraged, not required; follow typical school procedures, no changes necessary
Orange I 3.1% - 4% per site	If declared a state of emergency by the Governor pursuant to SB 658, masks will be required in hallways and entering/exiting buildings and in large group settings. Masks will be recommended in the classroom.
Orange II 4.1% - 5% per site	Masks required at all times; Follow stricter cleaning and social distancing protocol.
Red Greater than 5% per site	School Shutdown for 10 calendar days, students move to virtual learning

This plan will remain flexible and is subject to change as factors around the virus spread.